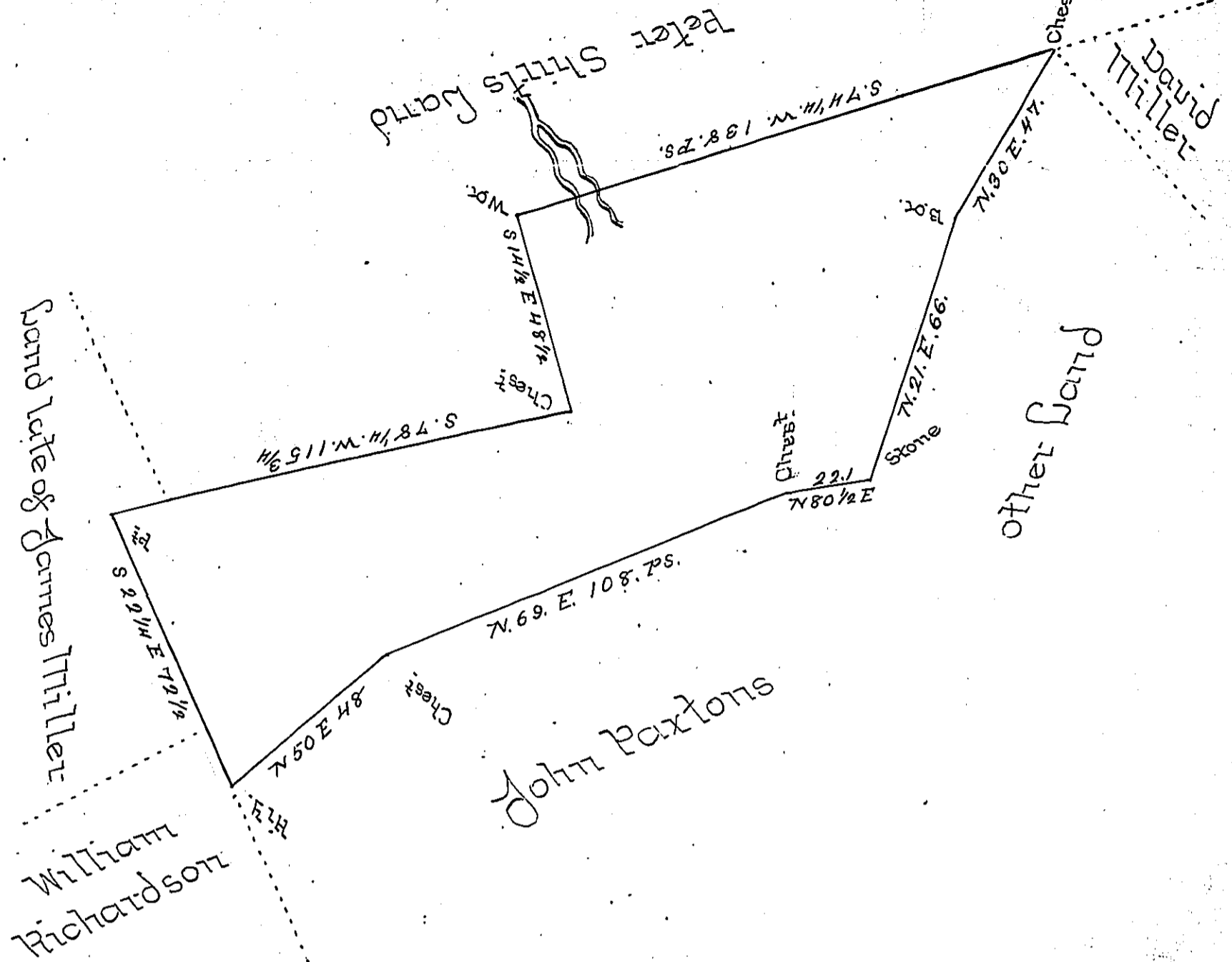


See pg. 50



A Draught of a piece or Tract of Land situate in Sadsbury Township Lancaster County Containing 83^{as} & 100^{ps} and the usual Allowance of six ^{ps} Cent for Roads &c Surveyed the 12th Day of November AD. 1803 unto Jonathan and Abraham Royer (It being part of a larger Tract of 157^{as} & Allowance, heretofore Surveyed unto Robert Mucklewaine by virtue of a Warrant Dated the 20th Day of July AD. 1738

To Samuel Cochran Esq^r }
 Surveyor General - }
 & Sam^l Ensminger D.S.
 W^m Keam D.S.

IN TESTIMONY that the above is a copy of the original remaining on file in the Department of Internal Affairs of Pennsylvania, made conformably to an Act of Assembly approved the 16th day of February, 1833, I have hereunto set my Hand and caused the Seal of said Department to be affixed at Harrisburg, this second day of May 1899.

James W. Latta
 Secretary of Internal Affairs.